

ROSEMEAD

PRIVATE DINING ROOM



ABOUT ROSEMEAD

A modern Californian restaurant by Jigger & Pony Group, Rosemead is located in a 1920s heritage building near Raffles Place in Singapore's CBD. Rosemead presents a contemporary style of dining that is refined yet relaxed and convivial.

The restaurant is helmed by Co-Owner and Group Executive Chef David Tang and General Manager James Moon.

Named after Chef David's hometown in California, Rosemead consists of spaces that include the buzzy main dining room where an open hearth sets the stage and an intimate private dining room.



PRIVATE DINING ROOM



Seating Capacity

Seating: 10 pax

Standing: 15 pax

About the space:

Perfect for intimate celebrations and occasions such as birthdays, anniversaries, business meetings, and corporate events, Rosemead's private dining room comes with its own sound system and guests are welcome to decorate the space.



PRIVATE DINING ROOM MINIMUM SPEND

LUNCH	DINNER
\$1,000++	\$2,000++

Minimum spend applies to all food and beverage for same day consumption.
In the event that the minimum spend is not met, a venue fee for the difference will be charged.

LUNCH Monday to Friday 12:00pm to 3:00pm
DINNER Tuesdays to Saturday 6:00pm to 11:00pm

*Extension of dining hours are subject to availability.



ALLERGIES AND SPECIAL DIETARY NEEDS

We would love to ensure you and your guests are well looked after, please inform us of any allergies or dietary requirements during the time of your booking.

CORKAGE POLICY

You may enjoy our 1-for1 corkage policy for 750ml wine bottles or choose to enjoy your special bottle of wine with a corkage fee \$65++ per 750ml wine bottle. Corkage is not available for spirits.

BRINGING A CAKE

We are more than happy to serve any cakes you bring to celebrate with your loved ones with a cake cutting fee of \$25 per cake. We would be more than happy to arrange a whole cake for celebrations from our Rosemead Bakery, please speak to our team on availability!

BOOKING REQUIREMENT

We would require a credit card authorisation hold to guarantee your reservation with us and a signed venue agreement form. In the event of No Show / Cancellation, we will be charging a \$500 cancellation fee. Cancellation or changes in dates must be made 2 days prior (48hours) to the event to avoid being charged for the cancellation fee.

The availability of the event date will be based on first come first serve basis.
A date is not considered secured until a credit card authorisation is finalised.

ROSEMEAD PRIVATE DINING FAQs

ARE WE ABLE TO DECORATE THE SPACE?

Yes, decorations are allowed in our private dining room. You may liaise with our event manager about your set-up requirements.

WHEN CAN I BEGIN MY EVENT SET-UP?

All set-ups are done on the day of the event itself, during non-operational hours. Our events manager will be able to advise on the best time to set-up.

DO YOU ALLOW MOVING OF FURNITURE?

If your event requires our furniture to be moved out of the venue, the event organizer should engage a third party moving service and storage.

MUST I REMOVE ALL MY SET-UP / FURNITURE / LOGISTICS AFTER THE EVENT?

Yes, all set-up items must be removed after the event ends or least 3 hours before Rosemead begin operations.

ARE WE ABLE TO BRING IN EXTERNAL CATERERS TO THE VENUE?

Unfortunately, we do not allow external catering. All food & beverage must be provided by our venue. However, you may liaise with your event coordinator, exceptions can be made on a case-by-case basis.

CAN WE PLAY MY OWN MUSIC?

Yes, you may feel free to play your own music at the private dining room.

WHAT KIND OF MUSIC DO YOU PLAY?

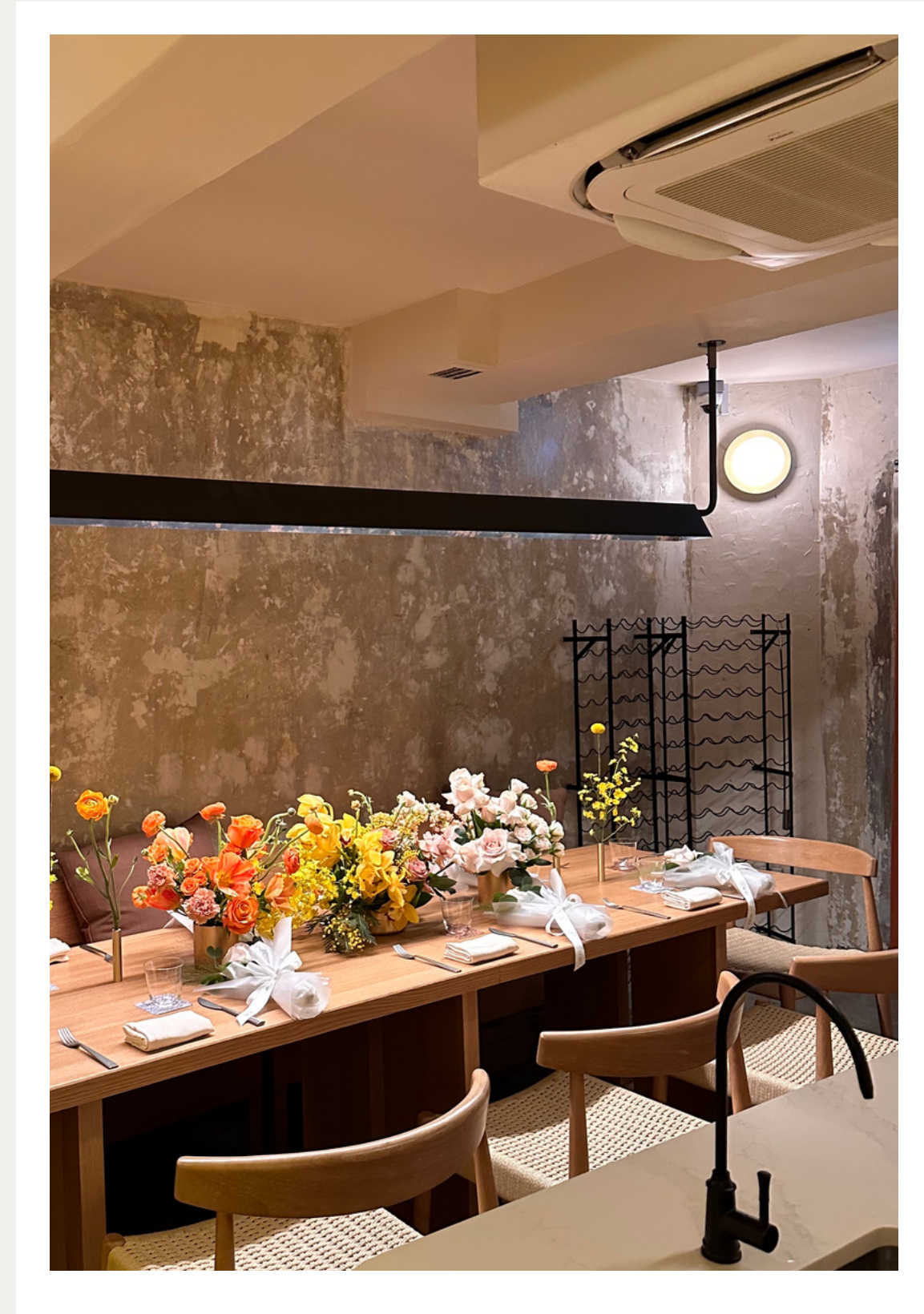
Our curated playlist features a mix of 80's and 90's hits.

DO YOU PROVIDE PROJECTORS AND/OR SCREENS?

Yes we do! We are happy to provide this for event bookings with a transport fee of \$60++, subject to availability. Do note that our projector does NOT come with a speaker for audio.

ARE THERE ANY ADDITIONAL CHARGES?

All services and goods are subject to 10% service charge and 8% GST.





ROSEMEAD

info@rosemead.sg

www.rosemead.sg

97819084

19 Cecil Street, Singapore 049704

DIRECTIONS TO ROSEMEAD

By Car:

Nearest parking is located at CapitaGreen.
We do not offer valet services.

By Train:

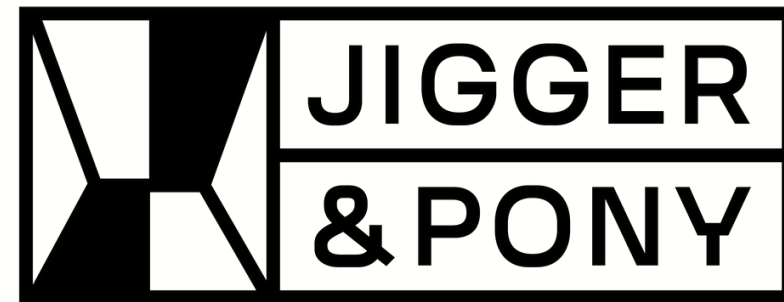
Raffles Place Station, Exit F

By Bus:

Alight at Prudential Tower - 03021

Alight at Raffles Pl Stn Exit F - 03031

OUR OTHER VENUES



*165 Tg Pagar Rd, Amara Hotel
Singapore 088539
Contact: 96211074*

Sugarhall

*19 Cecil St, Level 2
Singapore 049704
Contact: 98150246*

CAFFE FERNET

*70 Collyer Quay, #01-05, Customs House
Singapore 049323
Contact: 91781105*



*8-20 Bukit Pasoh Rd
Singapore 089834
Contact: 90118304*



*18-20 Bukit Pasoh Rd
Singapore 089834
Contact: 97729896*



*20 Bukit Pasoh Rd, 2nd Floor
Singapore 089834
Contact: 91148385*